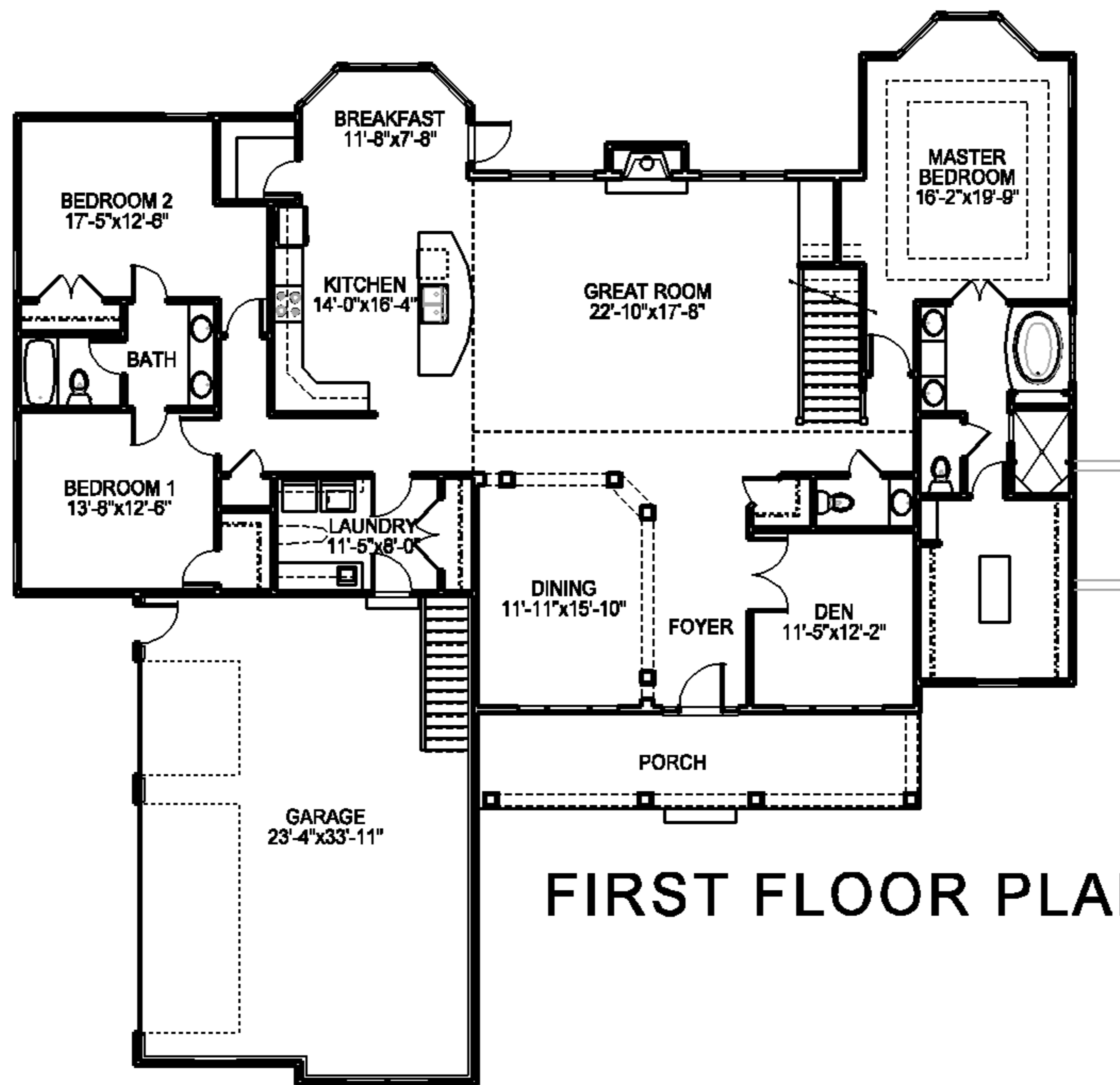




FRONT ELEVATION



FIRST FLOOR PLAN

SPECIFICATIONS OF KDG 2005-155

FOUNDATION	FULL BASEMENT	BEDROOMS	3
FIRST FLOOR S.F.	2,836 S.F.	BATHROOMS	2 1/2
SECOND FLOOR S.F.	0 S.F.	GARAGE:	3 CAR
TOTAL LIVING AREA	2,836 S.F.	HOUSE	74'-3" X 75'-0"